

Pedestrian



A person who is walking.

Corner



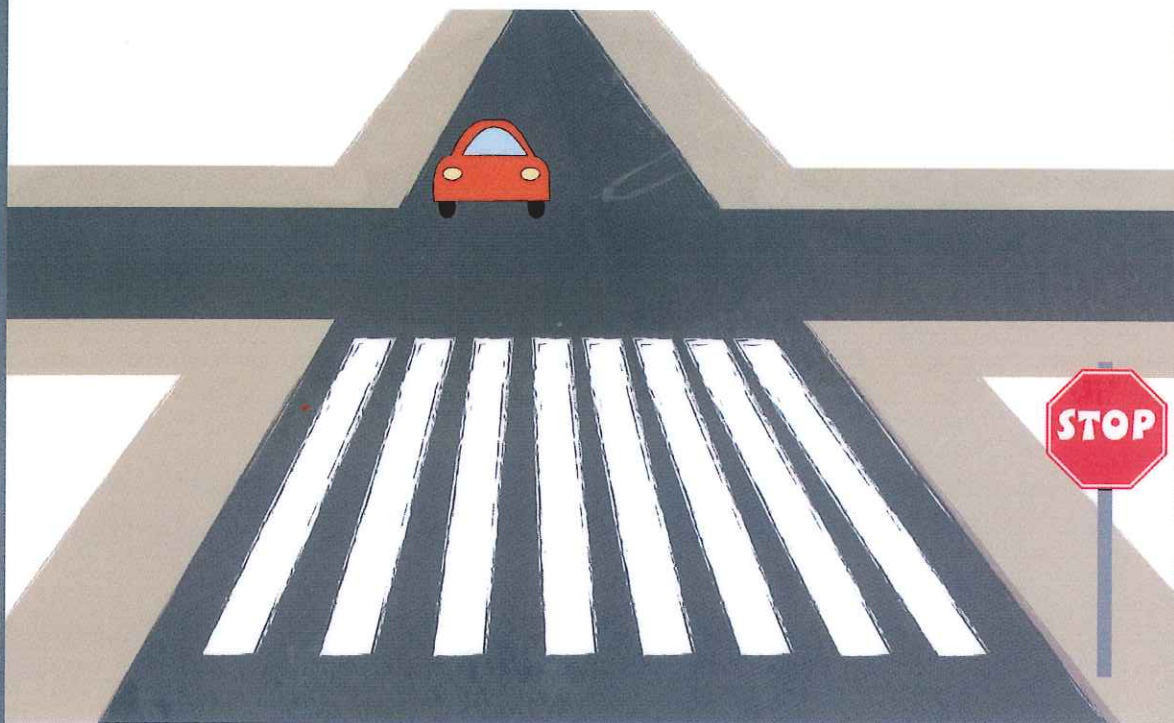
**Where the road bends
or turns.**

Curb



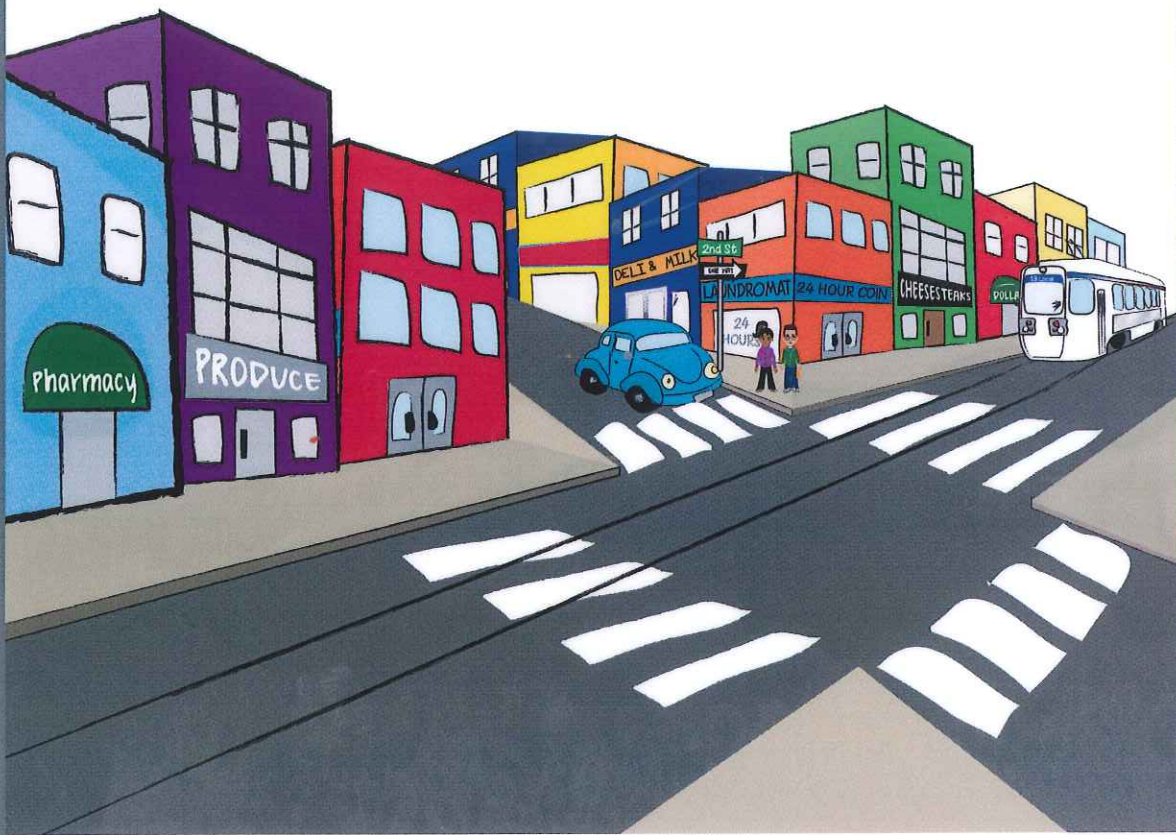
The edge of the street.

Crosswalk



**A marked place
to cross the street.**

Intersection



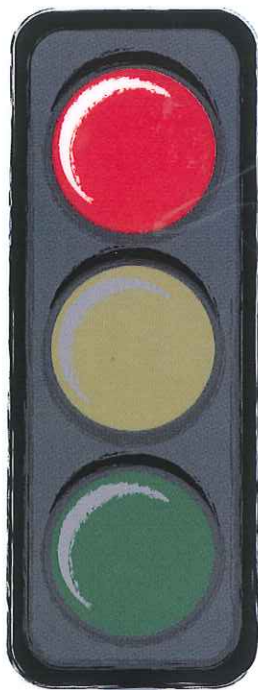
Where two roads meet.

Crossing Guard



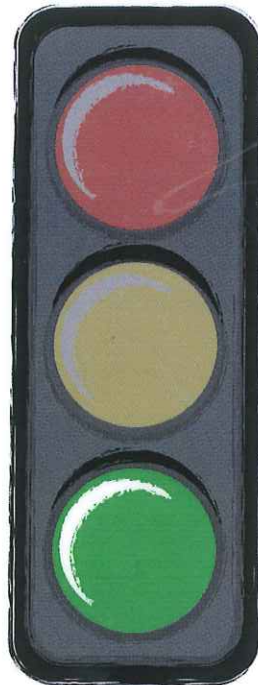
**A person who helps children
cross the street at intersection.**

Red



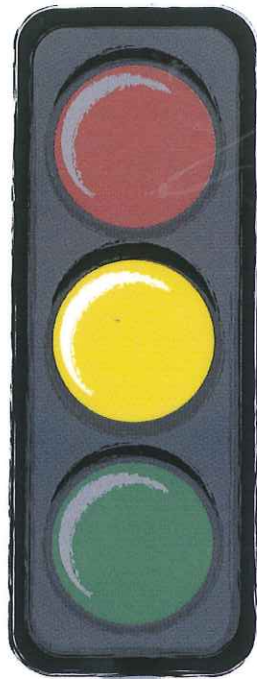
Red means to stop.

Green



**Green means go,
but always look first.**

Yellow



**Yellow means be careful,
signal is changing.**

Signals



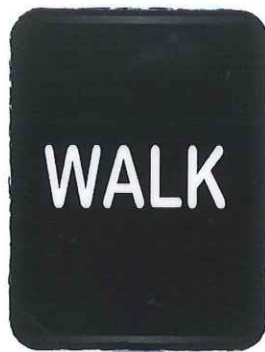
Lights that tell cars and people when to stop and go.

Don't Walk



Stop and wait for signal.

Walk



Go, but always look first.